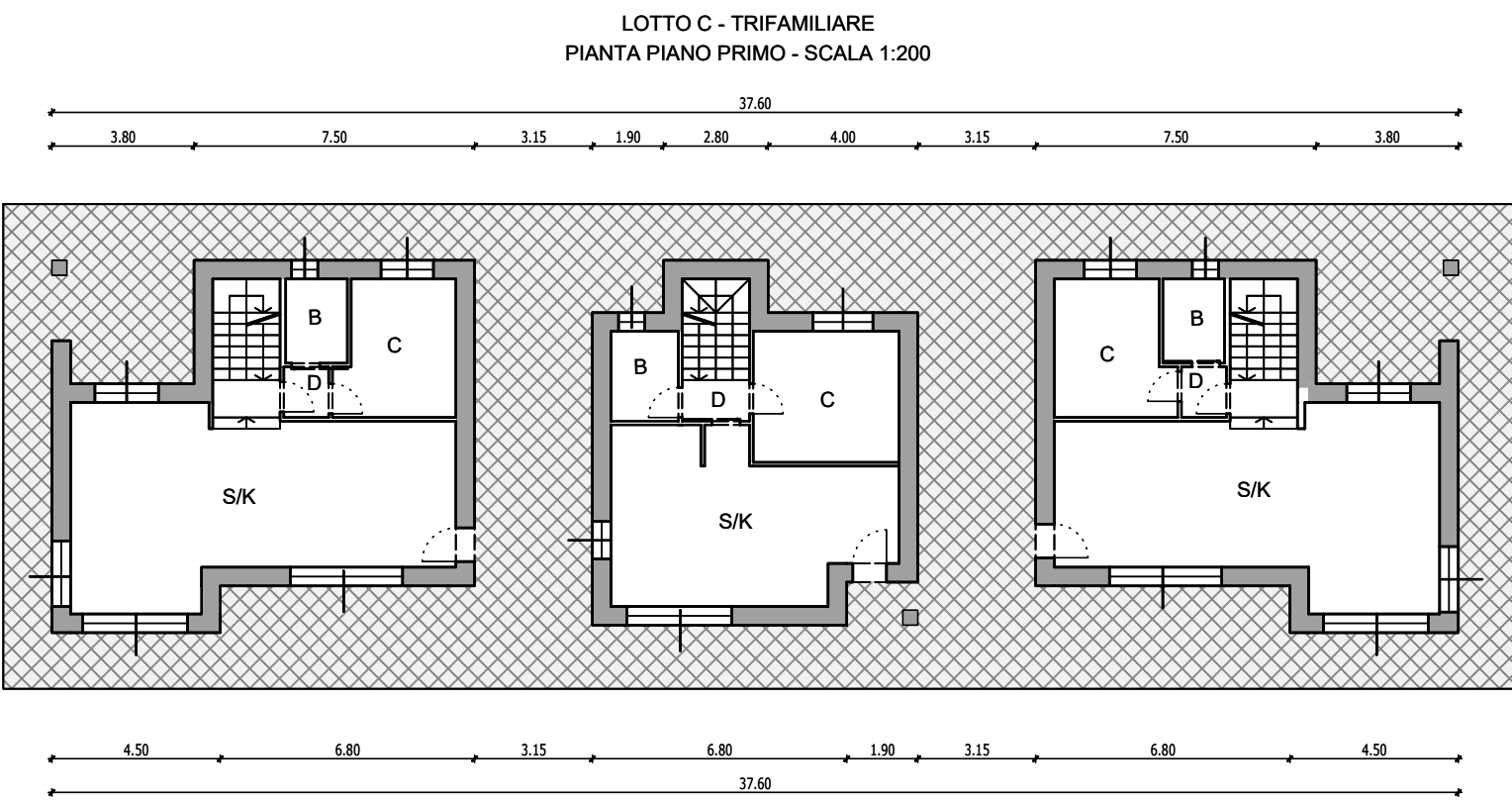
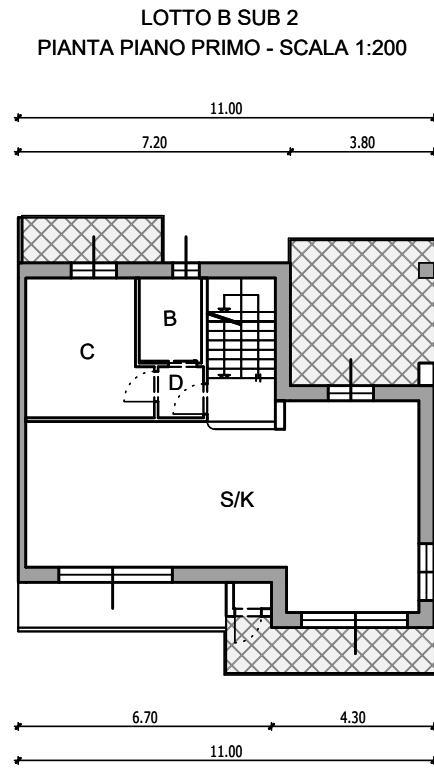
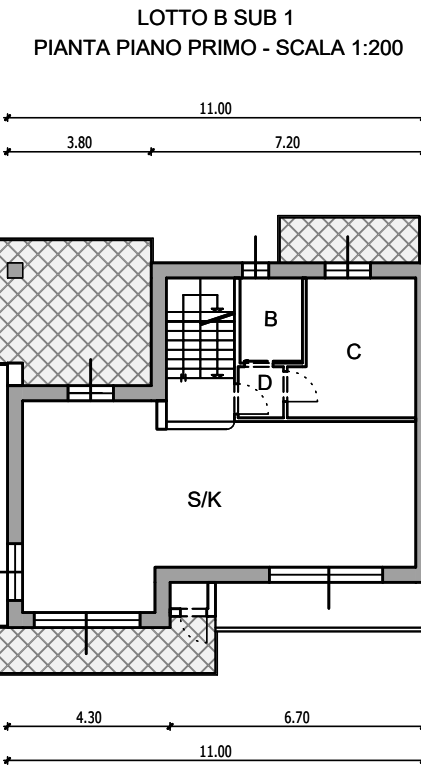
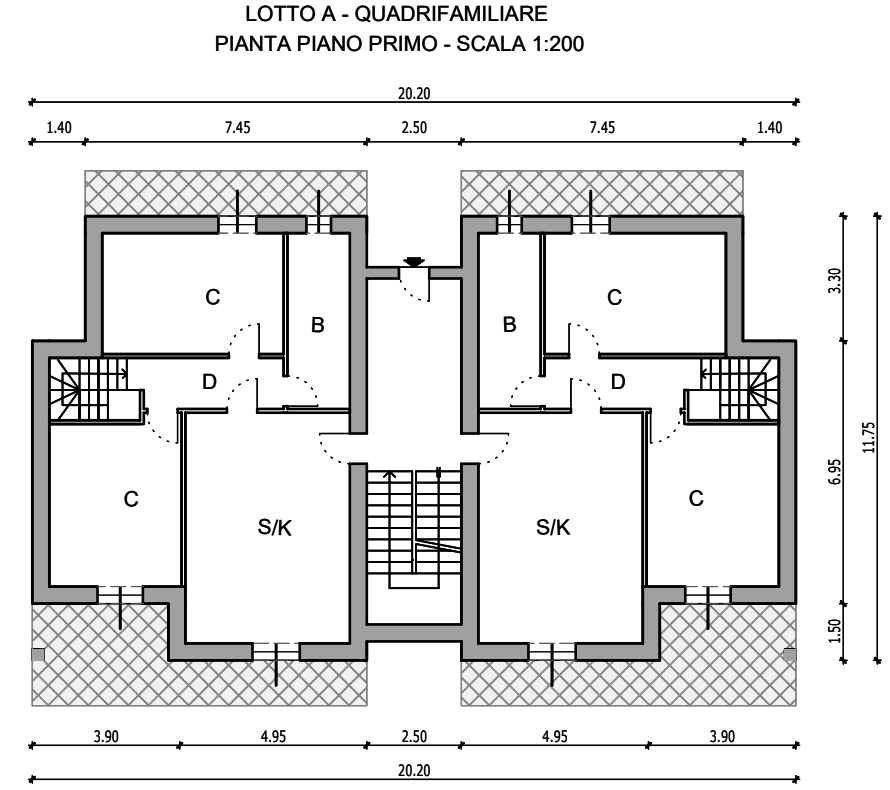
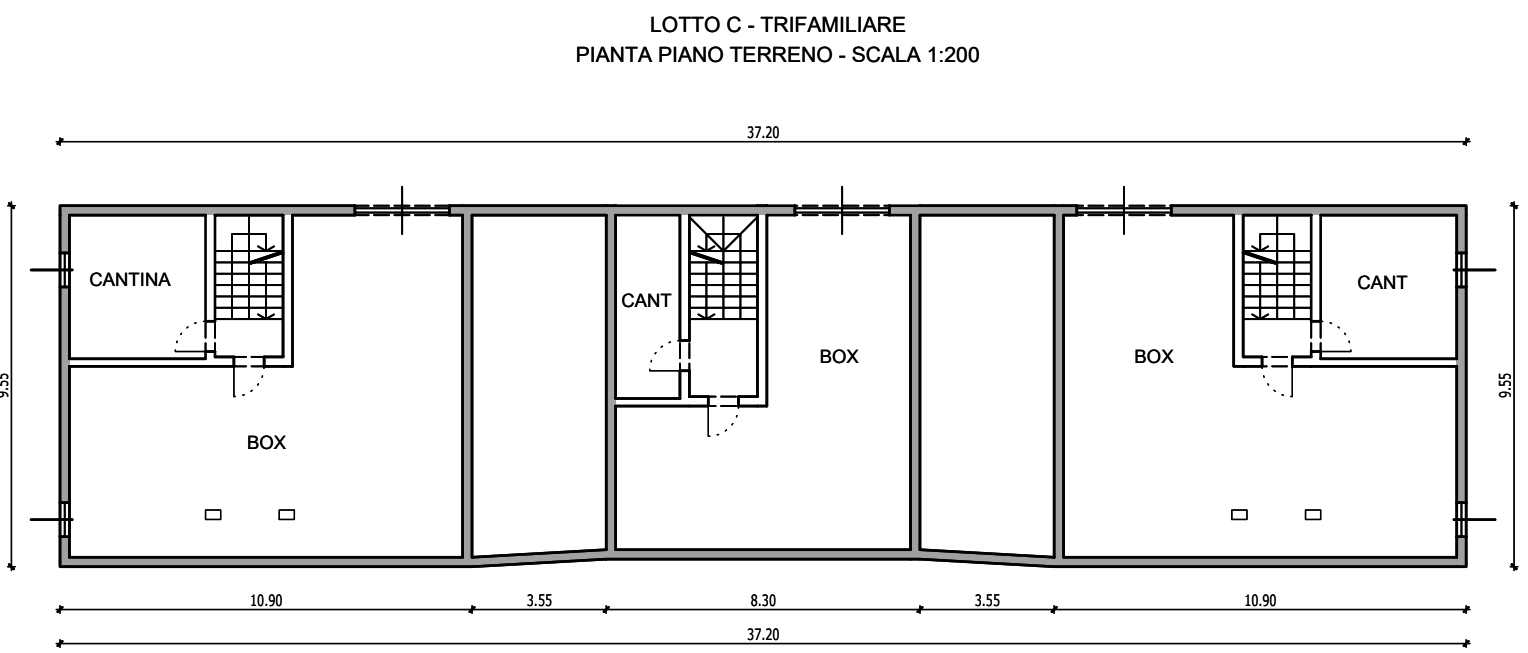
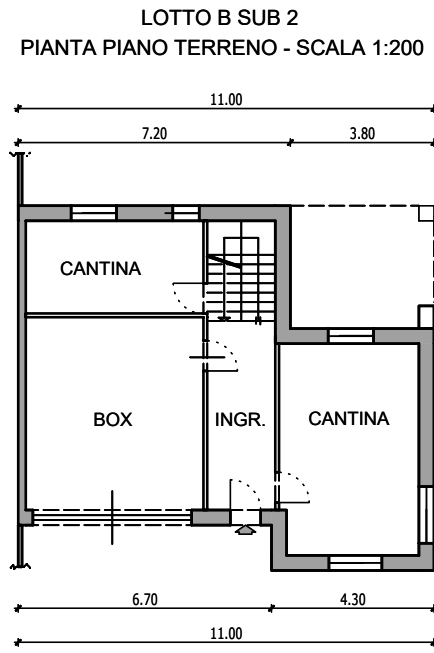
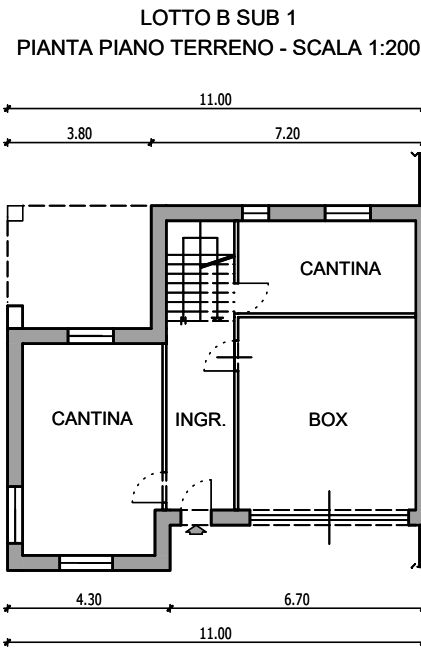
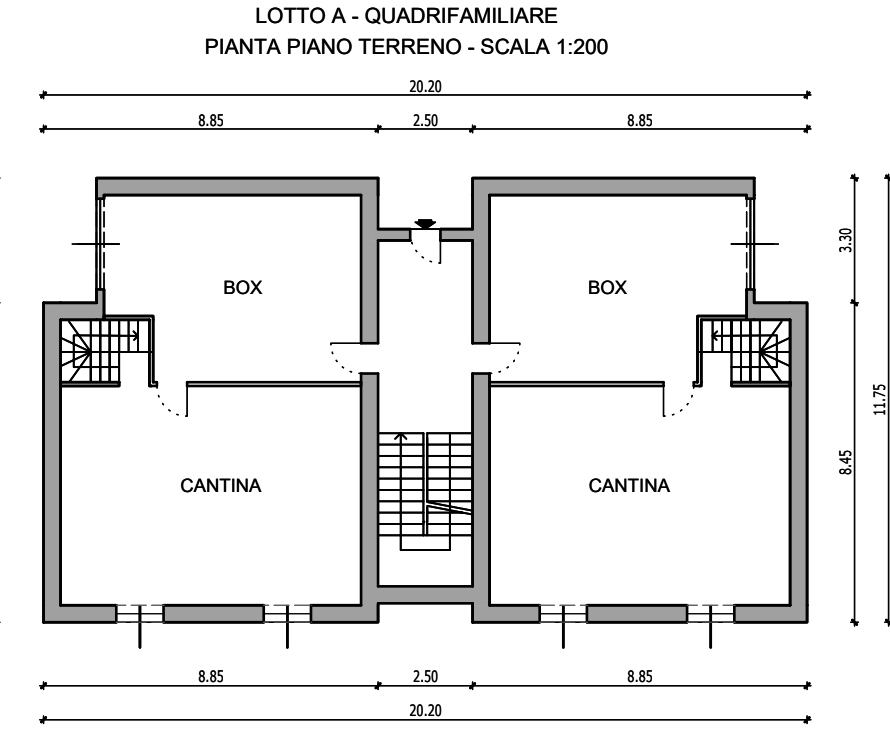
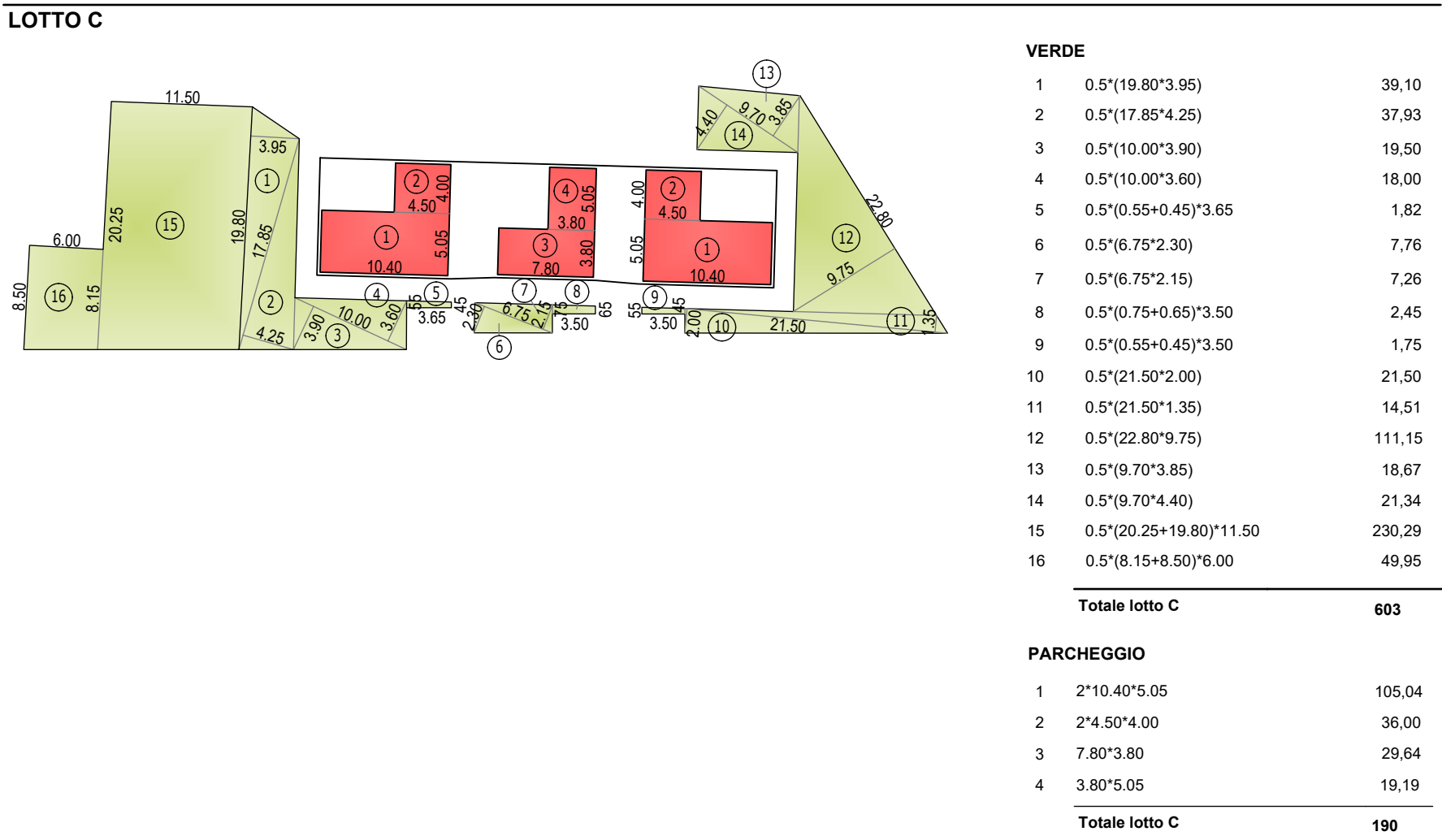
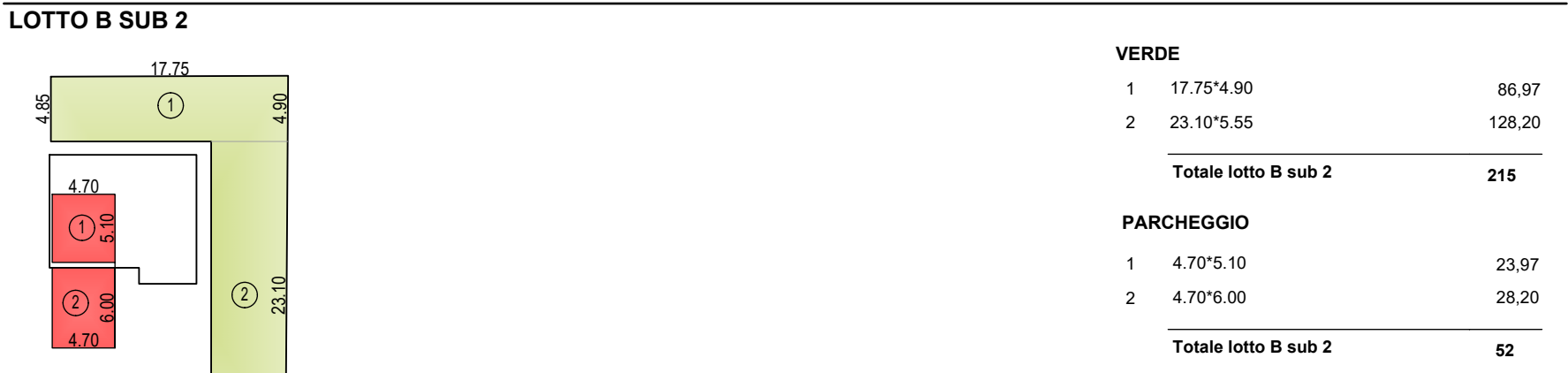
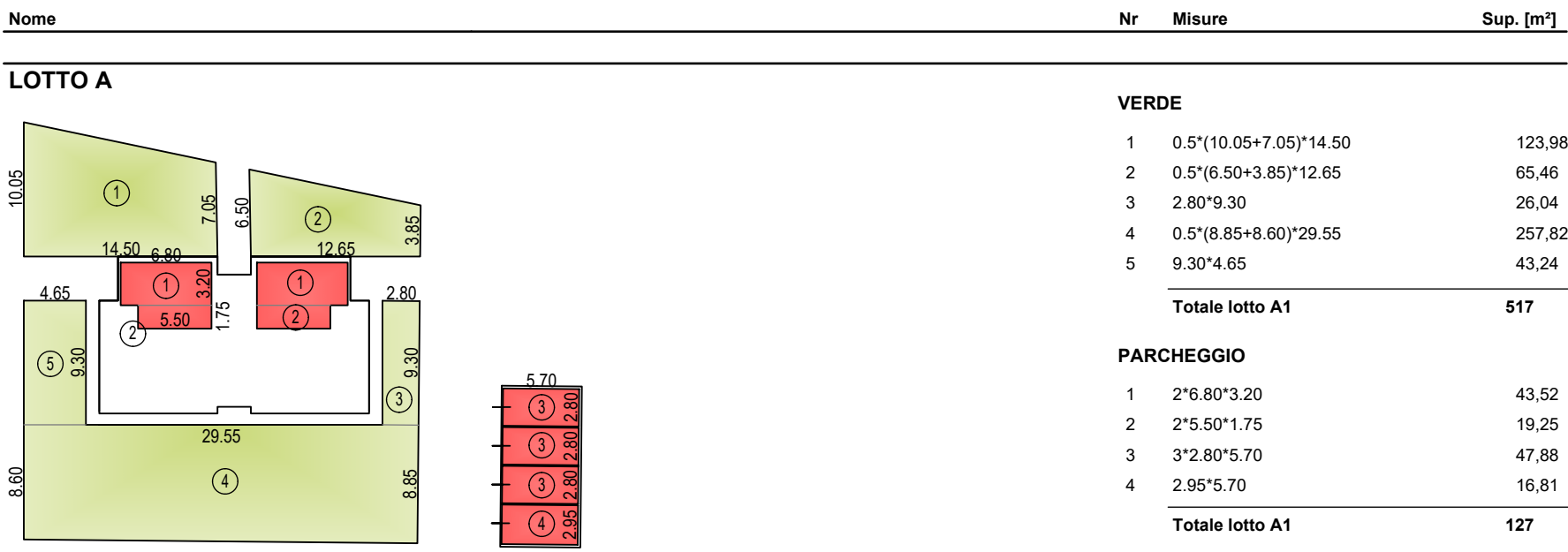
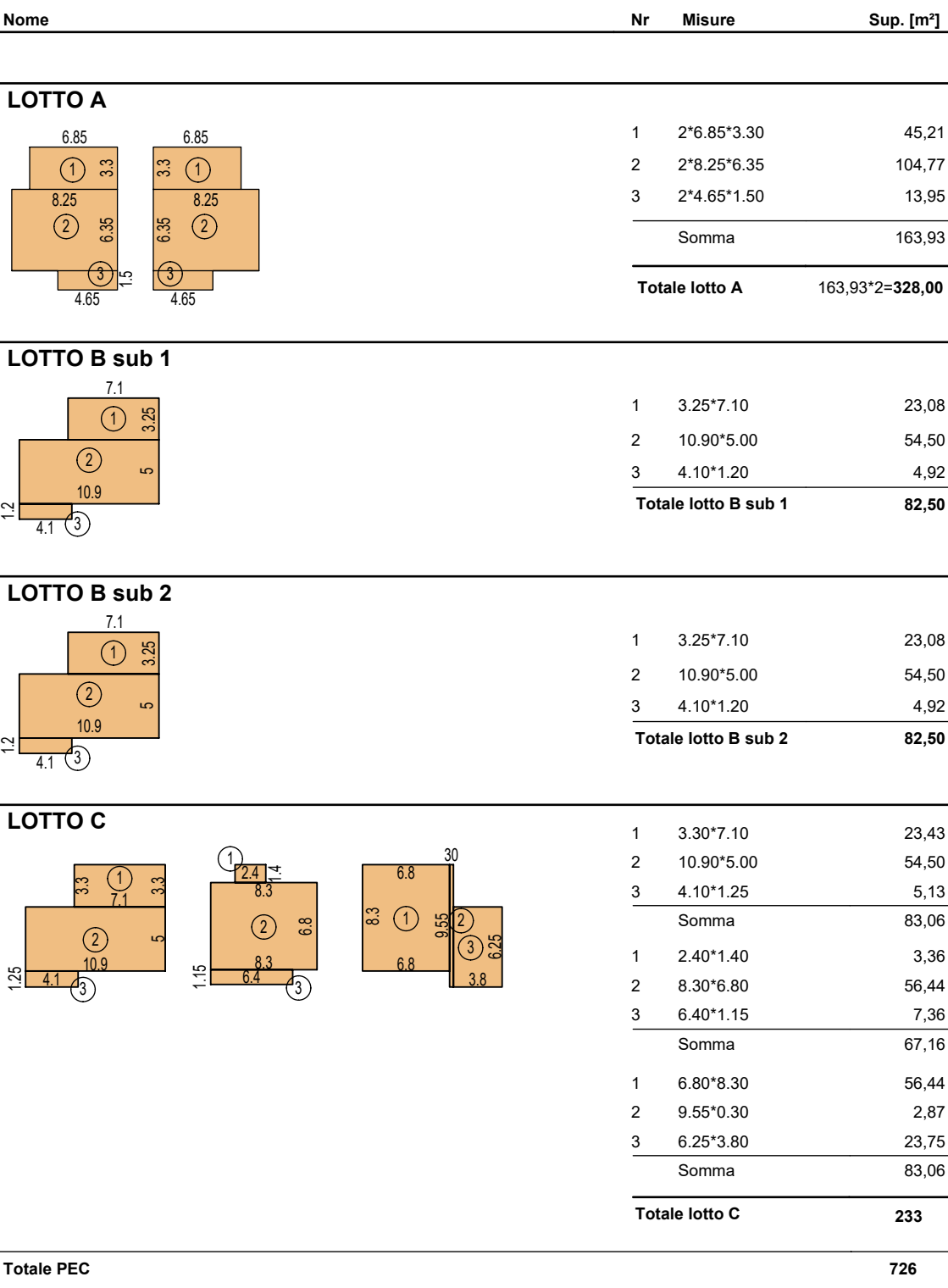


DIMOSTRAZIONE SUPERFICIE A VERDE PRIVATO - PARCHEGGIO PRIVATO



DIMOSTRAZIONE SUL



DIMOSTRAZIONE SC

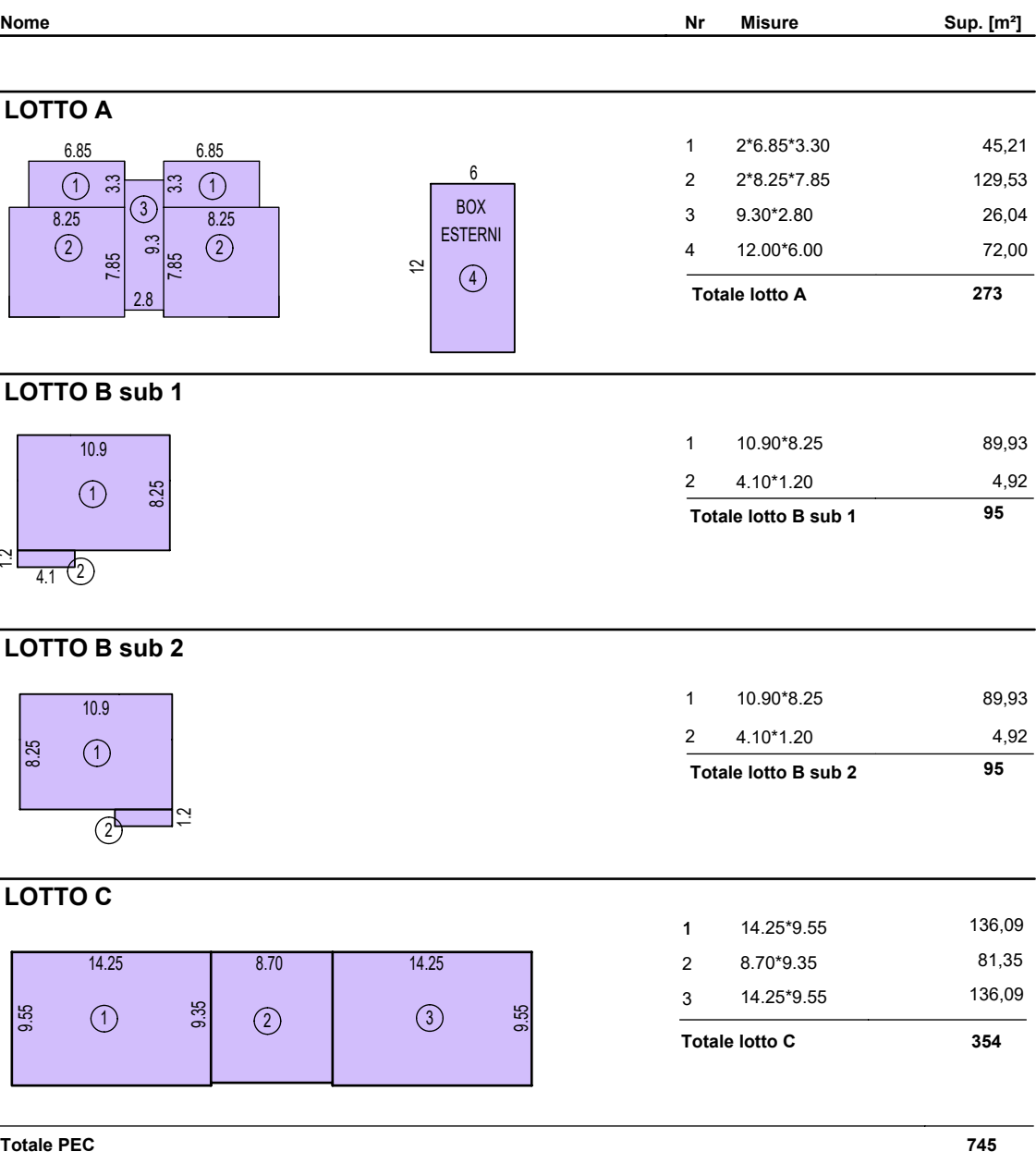


TABELLA RIASSUNTIVA PEC CR.III-10 <u>APPROVATO</u>																	
LOTTO	TIPO	N° PIANI	SUP. FOND. (mq)	SUPERFICIE COPERTA (mq)		Rc progetto (mq/mq)	SUP. LIBERA progetto (mq)	SUPERFICIE A VERDE (mq)		SUL (mq)	If progetto (mq/mq)	SUP.LORDA SOTTOTETTI USABILI MAX mq	VOL. (mc)	SUPERFICIE PARCHEGGIO mq			
				MAX	PROG.			RICH.	PROG.					MAX	PROG.	RICH.	PROG.
A1	QUDRIF.	3+sott	881	308,35	222,15	0,25	659	264	306	258,00	258,00	0,29	129,00	774	78	99	
A2	UNIFAM.	2+sott	583	204,05	82,04	0,14	501	201	313	70,95	70,73	0,12	70,95	213	22	30	
B	TRIFAM.	2+sott	994	347,90	248,37	0,25	746	299	373	165,00	159,90	0,16	165,00	480	48	48	
C	TRIFAM.	2+sott	1176	411,60	409,94	0,35	766	307	379	235,05	234,89	0,20	235,05	705	71	196	
			3634	1271,90	962,50	0,26				729,00	723,52		600,00				

TABELLA RIASSUNTIVA PEC CR.III-10 <u>VARIANTE N. 1</u>																
LOTTO	TIPO	N° PIANI	SUP. FOND. (mq)	SUPERFICIE COPERTA (mq)		Rc progetto (mq/mq)	SUP. LIBERA progetto (mq)	SUPERFICIE A VERDE (mq)		SUL (mq)	If progetto (mq/mq)	SUP.LORDA SOTTOTETTI USABILI MAX mq	VOL. (mc)	SUPERFICIE PARCHEGGIO mq		
				MAX	PROG.			RICH	PROG.					MAX	PROG.	RICH
A	QUADR.	3+sott	1.070,5	374,67	273	0,26	798	319	517	328,95	328	0,31	200	984	98	127
B1	UNIFAM.	2+sott	483	169,05	95	0,20	388	155	188	82,5	82,5	0,17	90	248	25	52
B2	UNIFAM.	2+sott	546	191,10	95	0,17	451	180	215	82,5	82,5	0,15	90	248	25	52
C	TRIFAM.	2+sott	1.532,5	536,38	354	0,23	1.179	472	603	235,05	233	0,15	220	699	70	190
			3.632	1.271,20	817	0,22				729	726					

COMUNE DI BRANDIZZO

CITTA' METROPOLITANA DI TORINO

Proprieta'

GAMMA TRE SRL - B&B SRL - MIELE FRANCO - MIELE VITO - TODESCO MARCO - PERINO LARA
PERINO MARIO - BALLELIO LAURA - PERINO GIUSEPPE - CANDILORO DOMENICA

Progettista

STUDIO ASSOCIATO DI INGEGNERIA MERLO
VIA TORINO, 170 - 10032 BRANDIZZO (TO)
TEL/FAX 011. 9139146
P.IVA 08774610011

PIANO ESECUTIVO CONVENZIONATO

CR.III-10 - VARIANTE N. 1

Tavola

TIPOLOGIE EDILIZIE
SUL - SC - STANDARDS PRIVATI

0

novembre 2017

Presentazione

SCALA

PROTOCOLLO

TAVOLA

U03

NOME FILE

C:\Data\

LA PROPRIETA':

IL PROGETTISTA:

Ing. PAOLO MERLO
Iscritto all'Ordine degli Ingegneri
della Provincia di Torino n. 9152F
C.F. MRL PLA 73H26 L219U

TIMBRO E FIRMA

H/L = 594 / 841 (0.50m²)

Alplan 2018